

Break the shackles of vision and open a new chapter in the "Visual" world.

Leye OneSeries

Ly55-09C/12c/12s/15s/18s/25s



Standard 55-inch unit display

Screen splicing is more convenient and the viewing proportion is more appropriate.



Integrated Modular Design

There is no any external device, and the signal source is directly displayed on the screen.



It has a rich variety of video interfaces

It supports video transmission interfaces such as HDMI, MPO optical port, RJ45, SFP optical port



Backup display

It supports video backup input via HDMI and MPO optical port



Multi-window display

It supports the arbitrary opening of windows on the screen and roaming display.



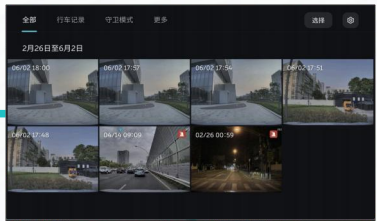
Interconnection and Interoperability

It supports the management of multiple screen groups and the interconnection and interoperability of signals, Visual human-machine interaction



Video Decoding

It supports signals from IPC network cameras, RTSP, etc., and these signals can be directly input and displayed on the large screen.



Product Model	LY55-09C	LY55-12C	LY55-12S	LY55-15S	LY55-18S	LY55-25S
Pixel Pitch	P0.9	P1.2	P1.2	P1.5	P1.8	P2.5
Cabinet Dimensions (Width x Height x Depth) /mm	1212x681.75x39	1212x681.75x39	1212x681.75x39	1212x681.75x39	1212x681.75x39	1212x681.75x39
Unit Resolution	1280x720	960x540	960x541	768x432	640x360	480x270
Panel Technology	COB	COB	SMD	SMD	SMD	SMD
Luminance	800nits	700nits	750nits	600nits	750nits	800nits
Contrast Ratio	1000000: 1	1000000: 1	4000: 1	4000: 1	4000: 1	4000: 1
Color Temperature	3000K~9300K Adjustable					
Refresh Rate	3840Hz					
Video Interface	HDMIx1 / MPOx1 / 1000M RJ45x1 / SFPx1					
Operating Voltage	AC100V-240V					
Peak Power Consumption	500W/m ²	240W/m ²	550W/m ²	550W/m ²	450W/m ²	450W/m ²
Service Life	100000h					
Operating Temperature	-10℃-50℃					
Operating Humidity	10%-80% RH					
Weight	18.5kg/Unit					